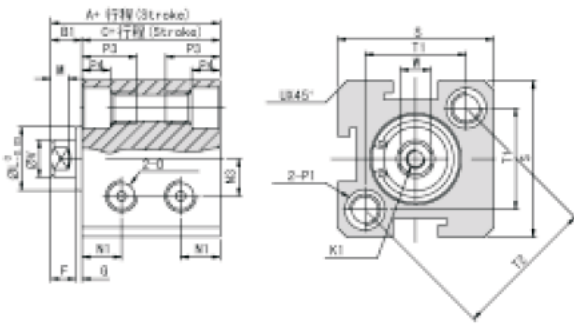
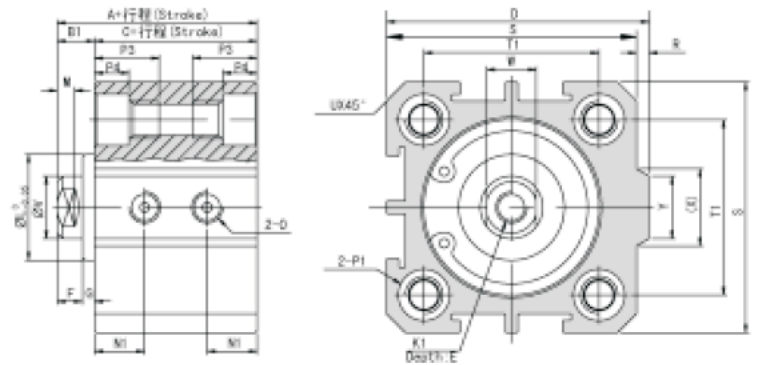


外形尺寸 / Overall Dimension

TYPE: SDA12-16



TYPE: SDA20-100



尺寸表 / Dimension Sheet

型式 / Type 内径 / 符号 Bore / Symbol	标准型 Standard type			附磁型 Attach magnet			D	E	F	G	K1	L	M	N1	N3	O
	A	B1	C	A	B1	C										
12	22	5	17	32	5	27	-	6	4	1	M3 × 0.5	10.2	2.8	6.3	6	M5 × 0.8
16	24	5.5	18.5	34	5.5	28.5	-	6	4	1.5	M3 × 0.5	11	2.8	7.3	6.5	M5 × 0.8
20	25	5.5	19.5	35	5.5	29.5	36	8	4	1.5	M4 × 0.7	16	2.8	7.5	-	M5 × 0.8
25	27	6	21	37	6	34	42	10	4	2	M5 × 0.8	17	2.8	8	-	M5 × 0.8
32	31.5	7	24.5	41.5	7	34.5	50	12	4	3	M6 × 1	22	2.8	9	-	G1/8
40	33	7	26	43	7	36	58.5	12	4	3	M8 × 1.25	28	2.8	10	-	G1/8
50	37	9	28	47	9	38	71.5	15	5	4	M10 × 1.5	38	2.8	10.5	-	G1/4
63	41	9	32	51	9	42	84.5	15	5	4	M10 × 1.5	40	2.8	11.8	-	G1/4
80	52	11	41	62	11	51	104	15	6	5	M14 × 1.5	45	4	14.5	-	G3/8
100	63	12	51	73	12	61	124	18	7	5	M18 × 1.5	55	4	20.5	-	G3/8

内径 / 符号 Bore / Symbol	P1						P3	P4	R	S	T1	T2	U	V	W	X	Y	
12	双边 Double Side: φ6.5 牙 / Cog: M5 × 0.8						通孔 Through Hole: φ4.2	12	4.5	-	25	16.2	23	1.6	6	5	-	-
16	双边 Double Side: φ6.5 牙 / Cog: M5 × 0.8						通孔 Through Hole: φ4.2	12	4.5	-	29	19.8	28	1.6	6	5	-	-
20	双边 Double Side: φ6.5 牙 / Cog: M5 × 0.8						通孔 Through Hole: φ4.2	14	4.5	2	34	24	-	2.1	8	6	11.3	10
25	双边 Double Side: φ8.2 牙 / Cog: M6 × 1.0						通孔 Through Hole: φ4.6	15	5.5	2	40	28	-	3.1	10	8	12	10
32	双边 Double Side: φ8.2 牙 / Cog: M6 × 1.0						通孔 Through Hole: φ4.6	16	5.5	6	44	34	-	2.15	12	10	18.3	15
40	双边 Double Side: φ10 牙 / Cog: M8 × 1.25						通孔 Through Hole: φ6.5	20	7.5	6.5	52	40	-	2.25	16	14	21.3	16
50	双边 Double Side: φ11 牙 / Cog: M8 × 1.25						通孔 Through Hole: φ6.5	25	8.5	9.5	62	48	-	4.15	20	17	30	20
63	双边 Double Side: φ11 牙 / Cog: M8 × 1.25						通孔 Through Hole: φ6.5	25	8.5	9.5	75	60	-	3.15	20	17	28.7	20
80	双边 Double Side: φ14 牙 / Cog: M12 × 1.75						通孔 Through Hole: φ9.2	25	10.5	10	94	74	-	3.65	25	22	36	26
100	双边 Double Side: φ17.5 牙 / Cog: M12 × 1.75						通孔 Through Hole: φ11.3	30	13	10	114	90	-	3.65	32	27	35	26