

Flow Control Valve



订购码 / Ordering Code

ASC

-

08

系列代号

/Series Code

ASC: 精密型流量控制阀

ASC: Accurate Type Flow Control Valve

接管口径

Joint Pipe Bore

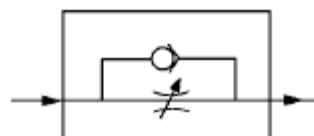
06: G1/8"

08: G1/4"

10: G3/8"

15: G1/2"

图形符号 / Graphic Symbol



规格 / Specification

型号 Model	Panel mounting type			
	ASC-06	ASC-08	ASC-10	ASC-15
接管口径 Joint Pipe Bore	G1/8"	G1/4"	G3/8"	G1/2"
工作介质 Working Medium	空气 Air			
使用压力范围 Working-pressure Range	0~0.95MPa			
使用温度范围 Operating Temperature Range	0~60℃			