

VX Series Two-position Two-way Solenoid Valve



订购码 / Ordering Code

VX2120

规格代码
/Specification Code

-

08

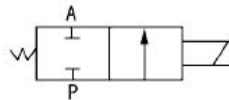
接管口径
Joint Pipe Bore
06: 1/8"
08: 1/4"
10: 3/8"
15: 1/2"

-

AC220V

标准电压
Standard Voltage
DC12V
DC24V
AC24V 50Hz/60Hz
AC110V 50Hz/60Hz
AC220V 50Hz/60Hz
AC380V 50Hz/60Hz

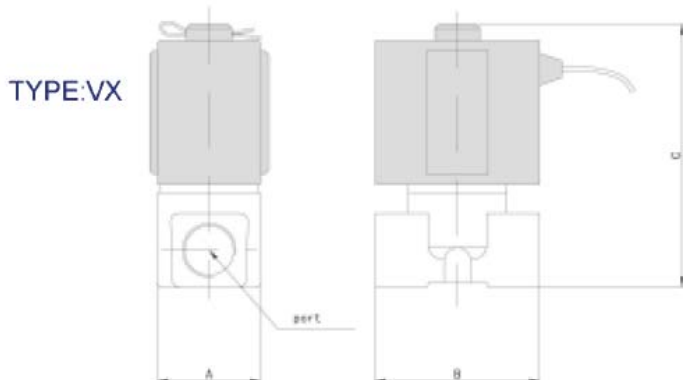
图形符号 / Graphic Symbol



规格 / Specification

型号 Model	VX2120-06	VX2120-08	VX2120-10	VX2120-15
工作介质 Working Medium	空气、水、蒸汽 / Air, Water, Steam			
动作方式 Motion Pattern	直动式 / Direct Drive Type			
型式 Type	常闭型 / Normal Close Type			
使用压力 Working pressure	0 ~ 1.0MPa			
流量孔径 mm Aperture of Flow Rate	3		13	
接管口径 Joint Pipe Bore	1/8"	1/4"	3/8"	1/2"
使用温度范围 Operating Temperature Range	-5 ~ 150℃		-5 ~ 80℃	
油封材质 Material of Oil Seal	VITON		NBR	

外形尺寸 / Overall Dimension



尺寸表 / Dimension Sheet

型号 / Model	口径 / Bore	A	B	C
VX2120-06	1/8	25	40	64
VX2120-08	1/4	25	40	64
VX2120-10	3/8	48	68	110
VX2120-15	1/2	48	68	110